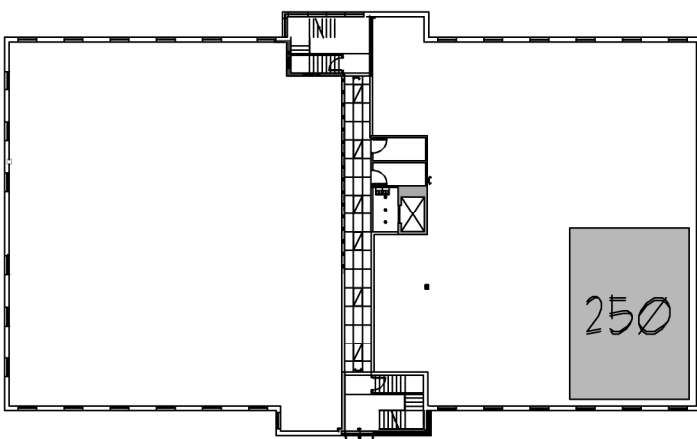


SPRINKLERS TO BE PROVIDED THROUGHOUT ENTIRE DEMISED PREMISES AS PER CODES AND IN ACCORDANCE WITH NFPA 13. IN ANY CASE, SPRINKLER HEADS SHALL BE LOCATED THAT THEY COVER AN AREA NOT MORE THAN 120 SQUARE FEET PER HEAD. HEADS SHALL BE LOCATED SO THAT THEY PROVIDE COMPLETE COVERAGE FOR THE INTENDED SPACES. FIRE PROTECTION CONTRACTOR TO PROVIDE DESIGN AND CALCULATIONS AS REQUIRED STATE AND CITY CODES

ALL NEW ELECTRICAL WORK SHALL CONFORM TO THE FIRE AND BUILDING CODES OF NEW YORK STATE, THE NATIONAL ELECTRIC CODE, THE NATIONAL ELECTRIC SAFETY CODE AS WELL AS ANSI, NEMA, INSTITUTE OF ELECTRICAL AND ELECTRONICS ENGINEERS INC. (IEEE), NFPA, UNDERWRITER'S LABORATORIES INC, AND ALL LOCAL, CITY OF SARATOGA ELECTRICAL CODES AND ORDINANCES. ALL ELECTRICAL WORK SHALL BE INSPECTED BY THE NEW YORK STATE BOARD OF FIRE UNDERWRITERS

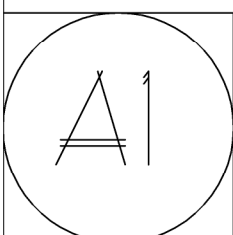
SPRINKLER CONTRACTOR TO INCLUDE FIRE ALARMS, STROBES FULL STATIONS AND OTHER ASSOCIATED EQUIPMENT AS PART OF THEIR DESIGN

FIRE EXTINGUISHERS ARE TO BE PROVIDED AND LOCATED AS PER APPLICABLE CODES.



KEY PLAN


DEMISED AREA 1500 SF



DATE	12-5-16
rev	1
rev	
rev	
SCALE	3/16" = 1'-0"

project:	DCG DEVELOPMENT
	TOWN PLAZA BUILDING 200 SPACE 250 RTE 146 CLIFTON PARK

tenant:	BRAD SNYDER
FLOOR PLAN	


TOM MANOLEFF
 518-588-2044